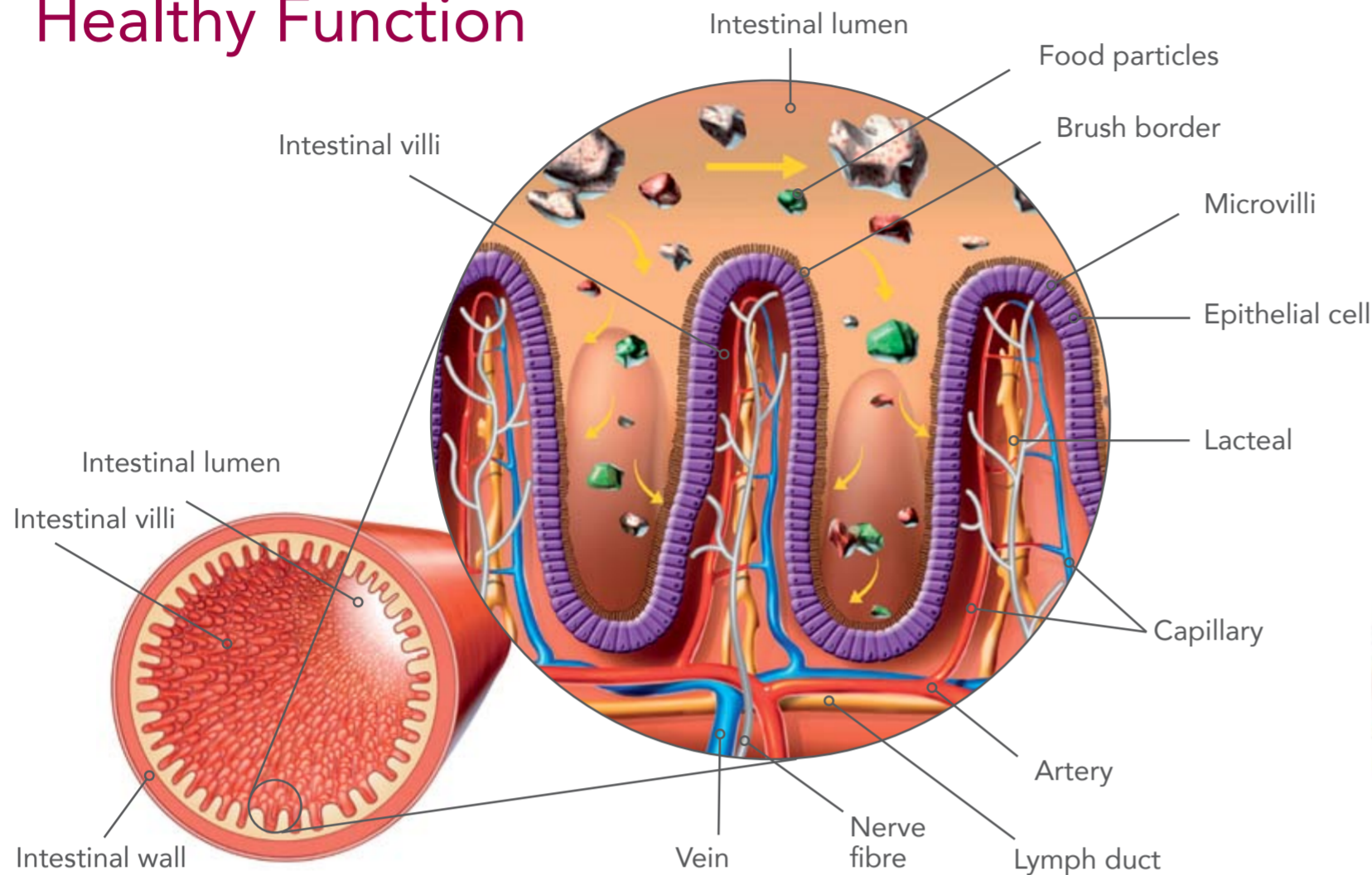


# Gastrointestinal Disorders

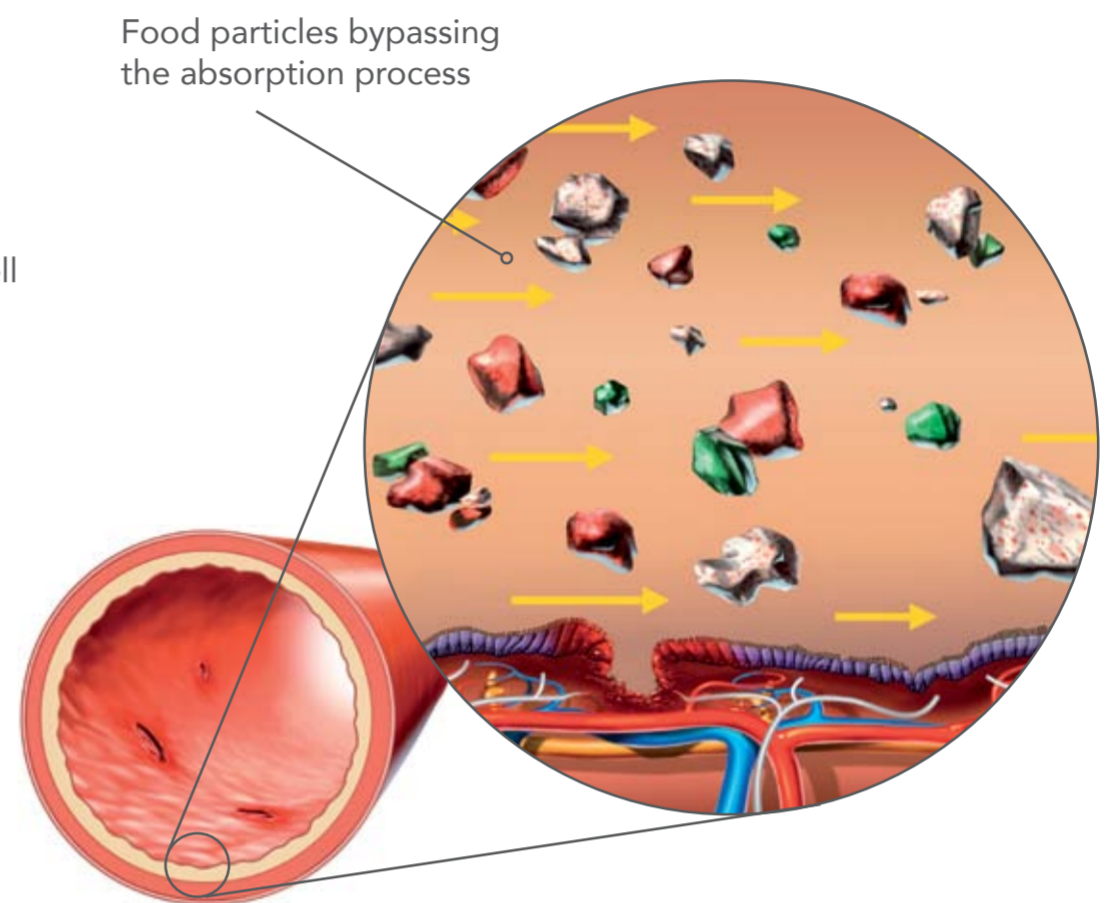
## SIGNS:

- Vomiting and diarrhoea
- Weight loss
- Anorexia
- Fresh blood in faeces
- Digested blood in faeces
- Abdominal enlargement
- Poor hair coat
- Borborismus
- Mucus in faeces
- Bloating
- Pain
- Lethargy
- Constipation

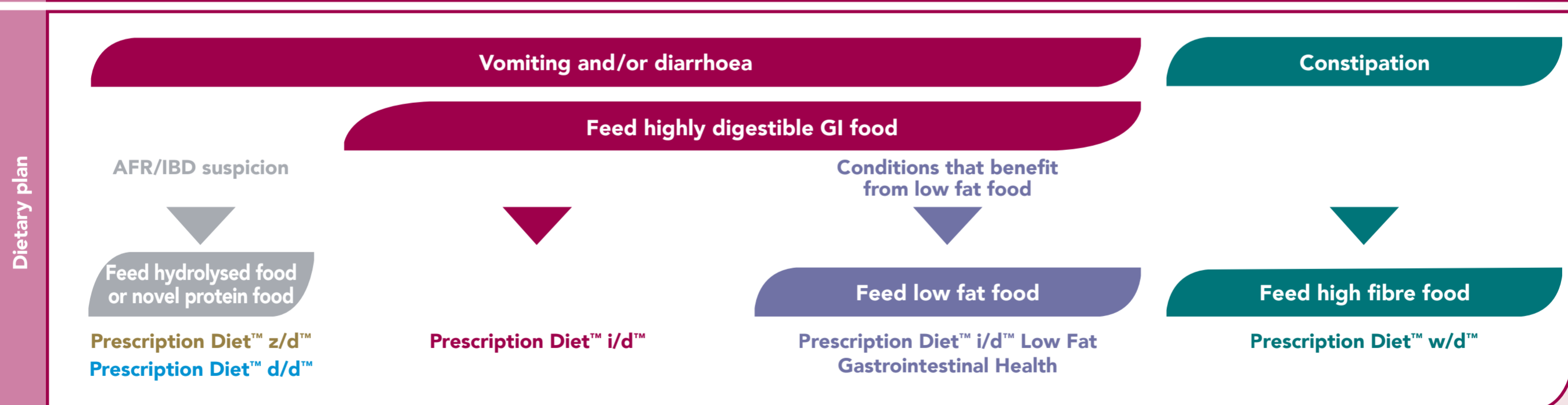
## Healthy Function



## Unhealthy Function



Cause	Allergic / Autoimmune	Infectious	Metabolic / Endocrine	Toxic	Others
Most common conditions	<ul style="list-style-type: none"> <li>• Food Allergy</li> <li>• Inflammatory Bowel Disease (with or without allergic component)</li> <li>• Wheat Gluten Enteropathy in Setters</li> </ul>	<ul style="list-style-type: none"> <li>• Parvovirus</li> <li>• Salmonellosis</li> <li>• FeLV</li> <li>• Clostridium</li> <li>• Helicobacter</li> <li>• Tapeworms (Cestodes)</li> <li>• Roundworms (Ascaris)</li> <li>• Whipworms (Trichuris)</li> <li>• Strongyloidosis</li> <li>• Coccidiosis</li> <li>• Giardia</li> </ul>	<ul style="list-style-type: none"> <li>• Chronic Liver Disease</li> <li>• Chronic Kidney Disease</li> <li>• Hypoadrenocorticism</li> <li>• Exocrine Pancreatic Insufficiency</li> <li>• Malabsorption/ Maldigestion Syndrome</li> <li>• Pancreatitis</li> </ul>	<ul style="list-style-type: none"> <li>• Dietary Indiscretion</li> <li>• NSAIDs / Steroids</li> <li>• Toxic substances such as:                             <ul style="list-style-type: none"> <li>– Fertilizers</li> <li>– Herbicides</li> <li>– Cleaning Agents</li> <li>– Heavy metals</li> </ul> </li> </ul>	<ul style="list-style-type: none"> <li>• Antibiotic Responsive Diarrhoea</li> <li>• Gastric Dilation / Volvulus Syndrome</li> <li>• Neoplasia</li> <li>• Foreign Bodies</li> </ul>
Management	<ul style="list-style-type: none"> <li>• Corticosteroids</li> <li>• Immunosuppressive Agents</li> </ul>	<ul style="list-style-type: none"> <li>• Fluid Therapy</li> <li>• Antibiotics</li> <li>• Antiemetic Drugs</li> <li>• Gastric Prokinetic Agents</li> </ul>	<ul style="list-style-type: none"> <li>• Antidiarrhoeal Agents</li> <li>• Mucosa Protectants</li> <li>• Anthelmintic Drugs</li> </ul>	<ul style="list-style-type: none"> <li>• Address Primary Disease</li> <li>• Fluid Therapy</li> <li>• Adsorbants (activated charcoal)</li> <li>• Corticosteroids</li> <li>• Mucosa Protectants</li> <li>• Antiemetic Drugs</li> <li>• Vitamin K</li> </ul>	<ul style="list-style-type: none"> <li>• Surgery</li> <li>• Corticosteroids</li> <li>• Immunosuppressive Agents</li> </ul>



**Prescription Diet™ z/d™**  
Alleviates adverse reactions to food.



**Prescription Diet™ d/d™**  
Novel protein – alleviates adverse reactions to food.



**Prescription Diet™ i/d™**  
Helps resolve diarrhoea and improve digestion.



**Prescription Diet™ i/d™ Low Fat**  
Clinically proven to help GI tract recovery. (Canine only)



**Prescription Diet™ w/d™**  
Helps resolve fibre responsive conditions.



Clinical nutrition to improve quality of life™